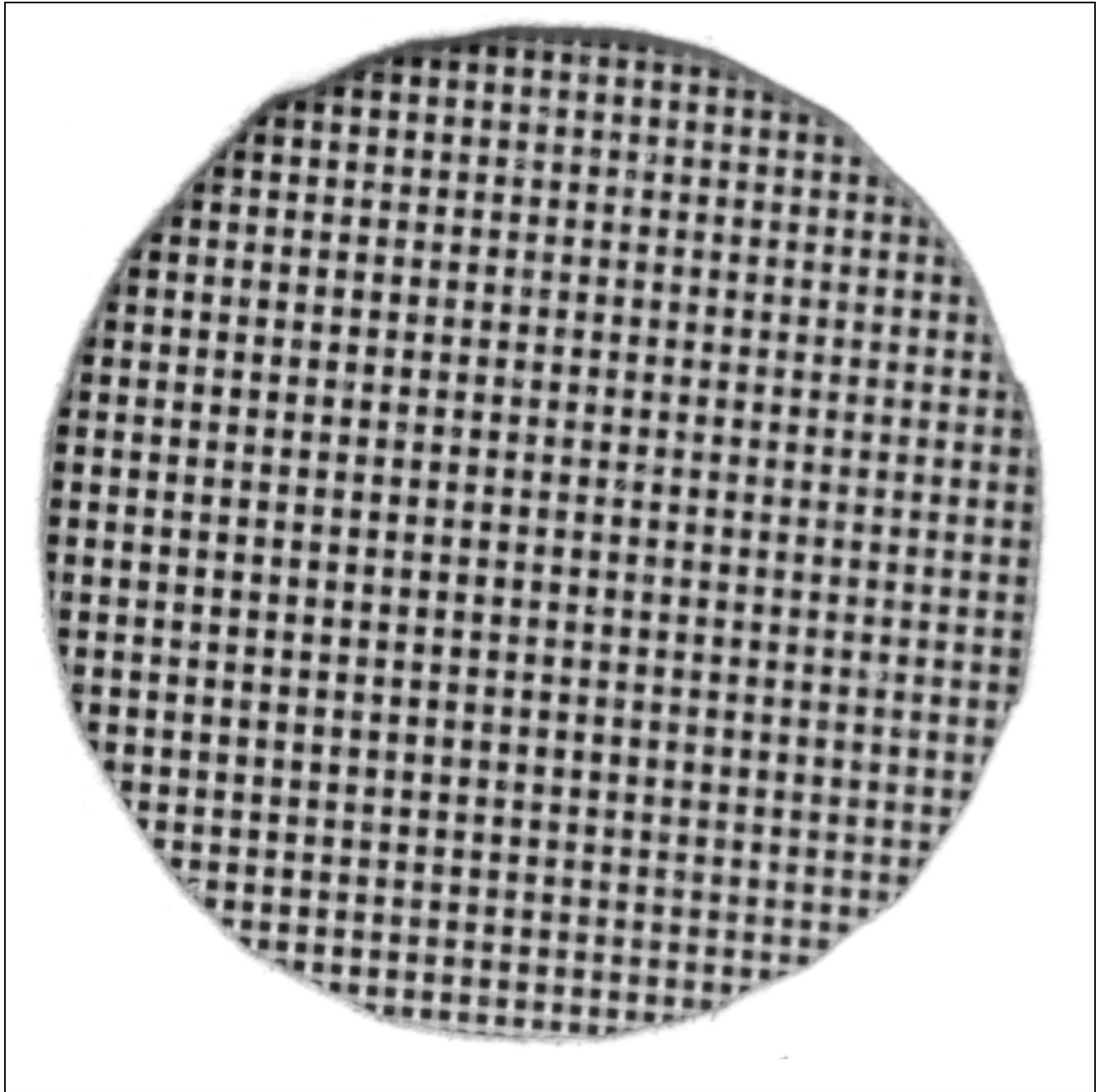
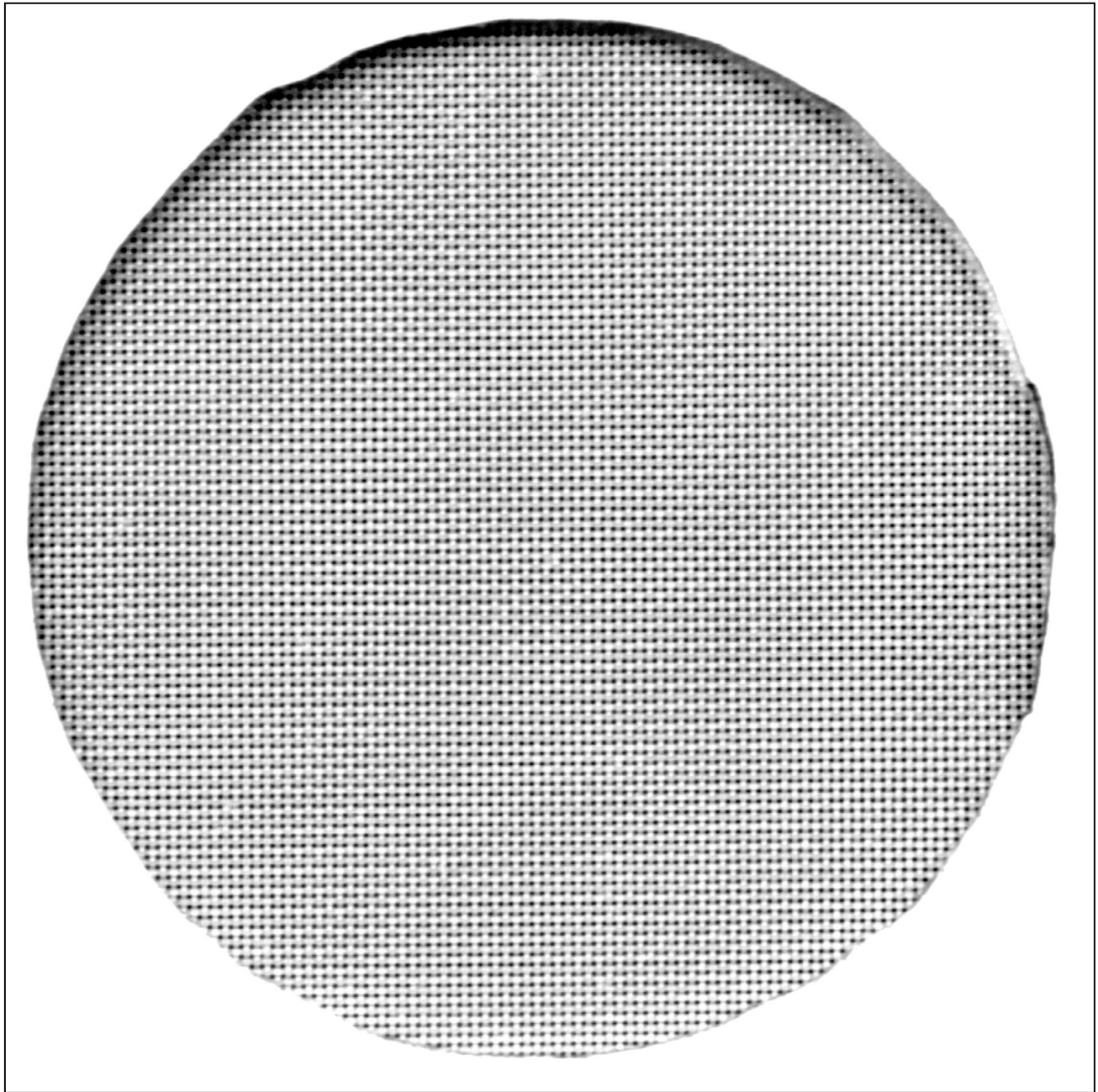


Close up of the 110/in porthole.



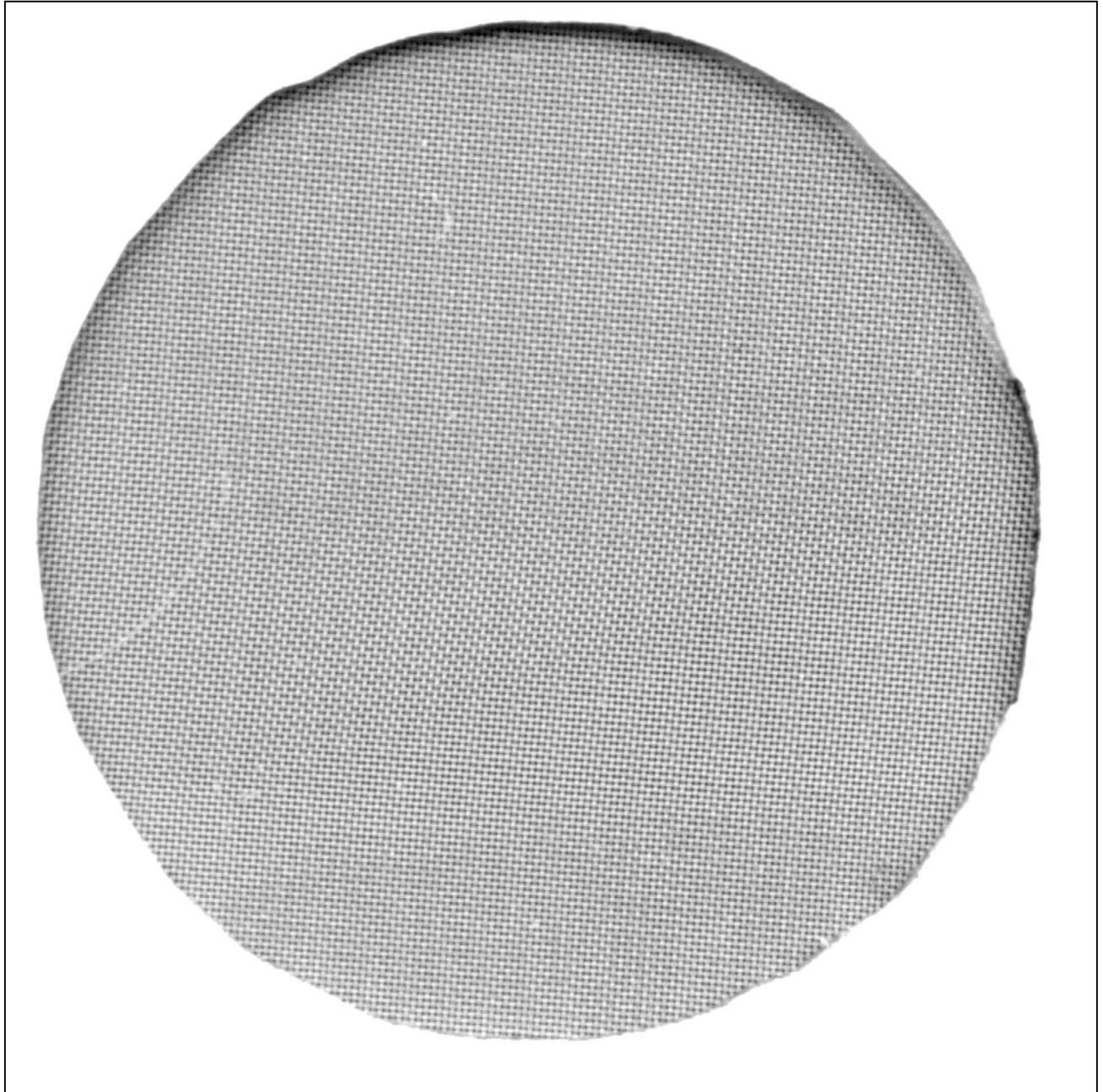
The entire porthole is about  $\frac{1}{2}$  inch in diameter.

Close up of the 195/in porthole.



The entire porthole is about  $\frac{1}{2}$  inch in diameter.

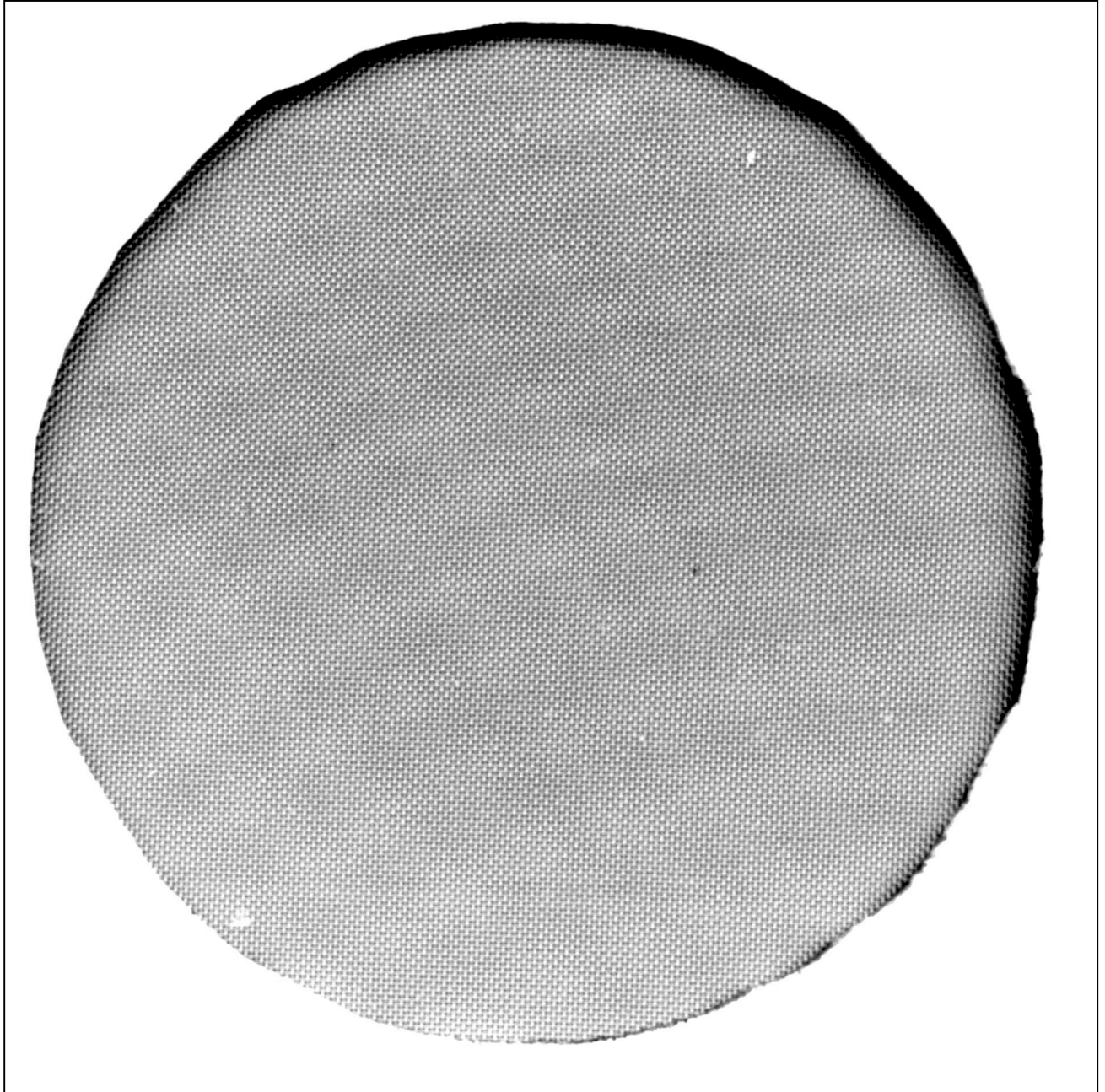
Close up of the 305/in porthole.



The entire porthole is about  $\frac{1}{2}$  inch in diameter.



Close up of the 380/in porthole.



The entire porthole is about  $\frac{1}{2}$  inch in diameter.